



Australian
Air League

FEDERAL AIR ACTIVITIES INSTRUCTION 20 ADDENDUM

F/AAI/02/14
AUGUST 2014

BALSA MODEL DESIGN FOR BALSA MODEL FLIGHT COMPETITION

AAL FEDERAL REVIEW 2014

1.0 Intention

- 1.1 The intention of this addendum is to clarify the size and design of the balsa chick glider that should be utilised in the "Balsa Model Flight Competition" at the AAL Federal Review

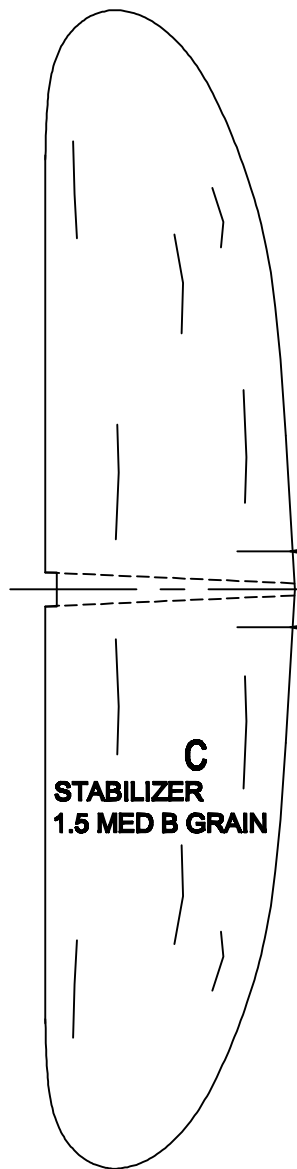
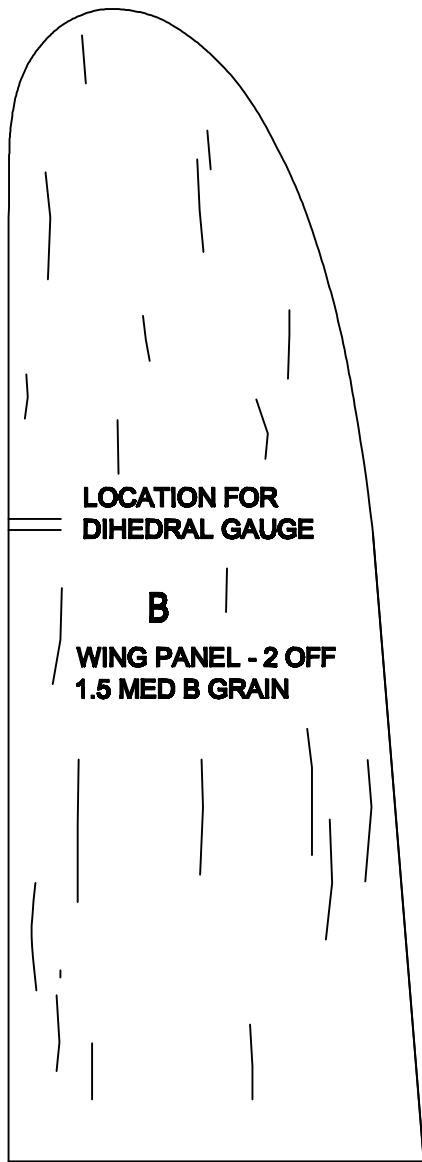
2.0 General

- 2.1 A few comments have been received that the use of the AAL Aircraft Modelling Class 4 Work Booklet could be problematic as there are several versions in circulation resulting in issues such as some workbooks having inconsistent plans, for one reason or another.
- 2.2 A standard plan is attached to this document which may help those who have found the workbook plan inconsistent and feel they would be disadvantaged in some way. The plan should be copied onto an A4 sheet to be kept to scale.

3.0 Conclusion

- 3.1 As a result of this and as the competition is to encourage fun and add some entertainment, Judges will be lenient in minor design variations away from this attached design to a degree, however obvious modifications away from the design will not be allowed.

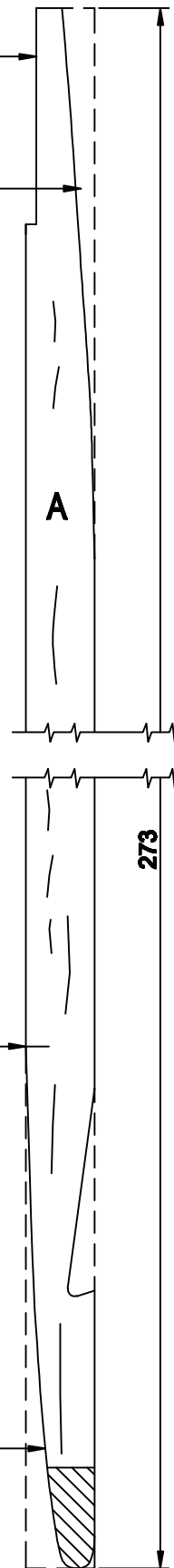
Commissioner Cameron Shaw
FEDERAL AIR ACTIVITIES COMMISSIONER



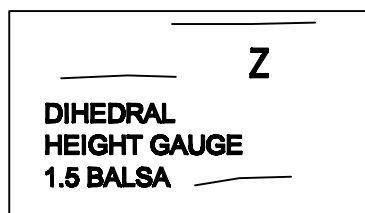
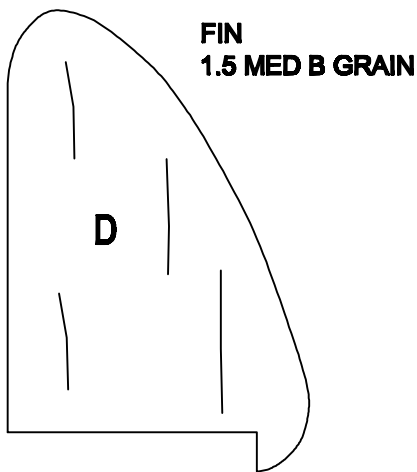
TRIM 1.5 FOR
STABILIZER
SEAT

TRIM AS SHOWN

CUT FOR
TRIM



FUSELAGE A CUT
FROM 10 x 4.5 x
273 LONG STRIP
HARD Balsa



TRIM AS SHOWN

REDRAWN JUNE 2014

HAWK 12" GLIDER TEMPLATE DRAWING

TEMPLATE DRAWING
FULL SIZE